



Sponsored Auction Locations

How To Use:

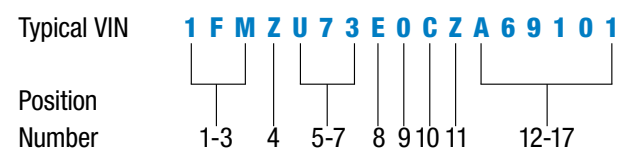
Here is your 2012 guide to interpreting universal Vehicle Identification Numbers (VIN). This vehicle information applies to 2012 models only. For previous model VIN information, check sources at your local dealerships or log onto

www.remarketing.dealerconnection.com

The VIN data provided is preliminary and prepared for the exclusive use of Ford and Lincoln dealers.

Example:

Universal Vehicle Identification Numbers (VIN) have 17 "positions." There is a number or a letter in each position.



Positions 1-3 World Manufacturer Identifier

Position 4 Restraint System Type
Brake Type and GVWR Class
(Trucks and Vans Only)

Positions 5-7 Line, Series, Body Type

Position 8 Engine Type

Position 9 Check Digit

Position 10 Model Year

Position 11 Assembly Plant

Positions 12-17 Production Sequence Number

North American Fleet, Lease & Remarketing Operations

Marketing, Sales and Service, Regent Court Building
16800 Executive Plaza Drive, Dearborn, Michigan 48126



Automotive Remarketing Services (ARS)
Automotive Remarketing Services offers the opportunity to sell previously-owned vehicles - Ford, Lincoln, Mercury or other brands - through the Ford Sponsored Auction Network.

ARS features:

- High Conversion Rate
- Hassle-free "Pickup-to-Payment" to reduce the remarketing complexity
- Premium Placement to maximize resale value
- Access to Ford Internet Sales Channels thru fordquic.com
- Buyer Finance Flexibility thru the Ford Credit Signature Plan
- Dedicated Ford Area Manager works to get your best price
- Convenient Interactive Website
- Professional Helpdesk Operations – ars@ford.com
- NO ENROLLMENT FEE!

Call 866-277-9142 toll-free for fast and hassle-free enrollment.



Ford Motor Company
Sponsored Auctions

Ford Sponsored Auctions

Anytime, Anywhere:

In the Lane

- Front-line ready vehicles nationwide

On the Internet

Broadcast Sales

- Purchase during "live" auctions using your desktop with Simulcast, Online Ringman, Live Global Bid and Liveblock

QUIC (Quality Used Internet Cars)

- View condition reports, window labels, vehicle images and purchase at www.fordquic.com

- Visit www.remarketing.dealerconnection.com for all your Ford Remarketing needs.

ARIZONA

ADESA Phoenix
Chandler, Arizona
Phone: 480-961-1161
Fax: 480-961-0089

CALIFORNIA

Brasher's Sacramento Auto Auction
Rio Linda, California
Phone: 916-991-5555
Fax: 916-991-5905

Manheim Riverside
Riverside, California
Phone: 951-689-6000
Fax: 951-602-9030

Manheim Southern California
Fontana, California
Phone: 909-822-2261
Fax: 909-854-2215

COLORADO

Manheim Denver
Aurora, Colorado
Phone: 303-343-3443
Fax: 303-343-2318

CONNECTICUT

Southern Auto Auction
East Windsor, Connecticut
Phone: 860-292-7500
Fax: 860-292-7598
Fax: 314-298-3347

FLORIDA

Manheim Ft. Lauderdale
Davie, Florida
Phone: 954-791-3520
Fax: 954-453-8435

Manheim Palm Beach
West Palm Beach, Florida
Phone: 561-790-1200
Fax: 561-753-1893

Manheim Tampa
Tampa, Florida
Phone: 800-622-7292
Fax: 813-248-3442

GEORGIA

Manheim Atlanta
Atlanta, Georgia
Phone: 404-762-9211
Fax: 404-669-5755

Manheim Georgia
Atlanta, Georgia
Phone: 404-349-5555
Fax: 404-349-9951

HAWAII

Manheim Hawaii
Honolulu, Hawaii
Phone: 808-840-8900
Fax: 808-840-8959

ILLINOIS

Manheim Chicago
Matteson, Illinois
Phone: 815-806-4222
Fax: 815-806-4228

INDIANA

ADESA Indianapolis
Plainfield, Indiana
Phone: 317-838-8000
Fax: 317-838-8081

MARYLAND

Manheim Baltimore-Washington
Elkridge, Maryland
Phone: 410-796-8899/
800-533-2923
Fax: 410-796-2733

MASSACHUSETTS

ADESA Boston
Framingham, Massachusetts
Phone: 508-626-7000
Fax: 508-626-7025

MICHIGAN

Manheim Detroit
Carleton, Michigan
Phone: 734-654-7100
Fax: 734-654-7147

MINNESOTA

Manheim Minneapolis
Maple Grove, Minnesota
Phone: 763-425-7653
Fax: 763-493-0310

MISSISSIPPI

Manheim Mississippi
North Hattiesburg, Mississippi
Phone: 601-268-7550
Fax: 601-579-7202

MISSOURI

Manheim Kansas City
Kansas City, Missouri
Phone: 816-452-4084
Fax: 816-459-7711

Manheim St. Louis
Bridgeton, Missouri
Phone: 314-739-1300

NEVADA

Manheim Nevada
Las Vegas, Nevada
Phone: 702-730-1400
Fax: 702-730-1541

NEW JERSEY

Manheim New Jersey
Bordentown, New Jersey
Phone: 609-298-3400
Fax: 609-298-4489

NEW YORK

ADESA Buffalo
Akron, New York
Phone: 716-542-3300
Fax: 716-542-3547

Manheim New York
Newburgh, New York
Phone: 845-567-8400
Fax: 845-567-8599

NORTH CAROLINA

Greensboro Auto Auction
Greensboro, North Carolina
Phone: 336-299-7777
Fax: 336-248-3442

OHIO

Manheim Ohio
Grove City, Ohio
Phone: 614-871-2771
Fax: 614-871-6845

PENNSYLVANIA

Manheim Auto Auction
Manheim, Pennsylvania
Phone: 717-665-3571
Fax: 717-665-9265

Manheim Pittsburgh
Cranberry Township, Pennsylvania
Phone: 724-452-5555
Fax: 724-452-1310

TENNESSEE

Manheim Nashville
Mount Juliet, Tennessee
Phone: 615-773-3800
Fax: 615-773-4814

TEXAS

Manheim Fort Worth
Euless, Texas
Phone: 817-399-4000
Fax: 817-399-4251

Manheim San Antonio

San Antonio, Texas
Phone: 210-661-4200
Fax: 210-572-6495

Manheim Texas Hobby
Houston, Texas
Phone: 713-649-8233
Fax: 913-640-8395

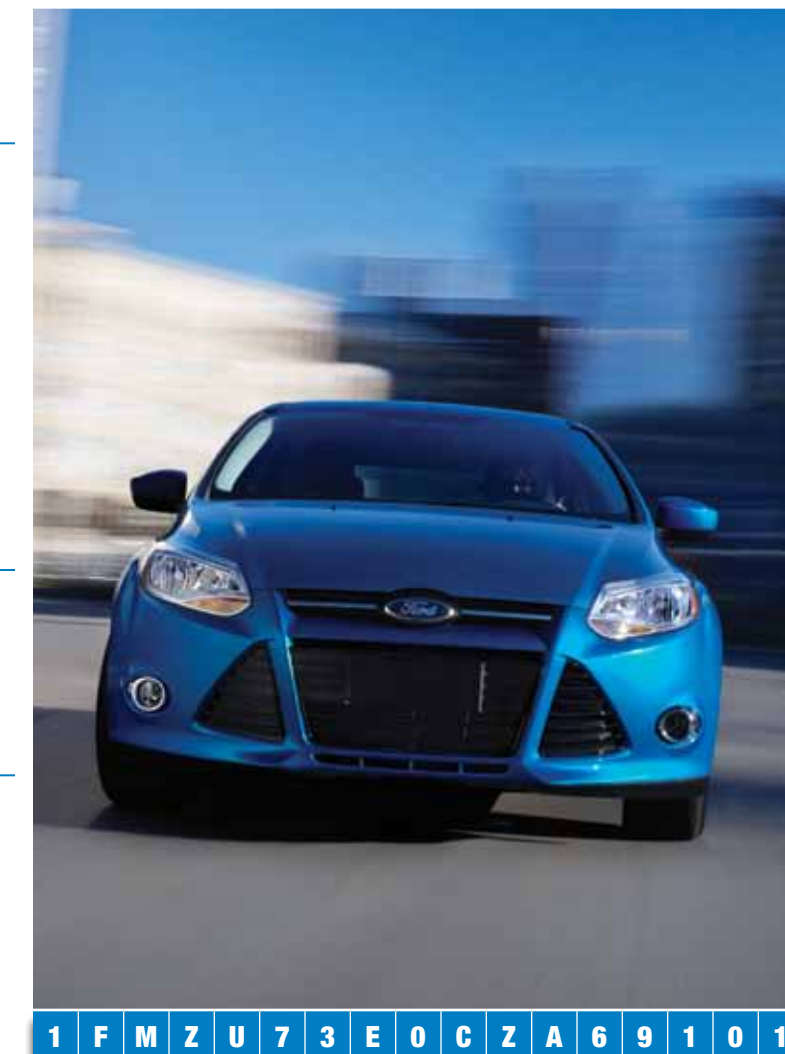
UTAH

Brasher's Salt Lake Auto Auction
Salt Lake City, Utah
Phone: 801-322-1234
Fax: 801-322-1315

WASHINGTON

Dealers Auto Auction Northwest
Spokane, Washington
Phone: 509-244-4500
Fax: 509-244-8244

Manheim Seattle
Kent, Washington
Phone: 253-872-6800
Fax: 253-395-3342



1 F M Z U 7 3 E O C Z A 6 9 1 0 1

2012 VIN GUIDE

VIN POSITIONS 1, 2, 3			
VIN Code	Vehicle Manufacturer	Make	Type
PASSENGER CARS			
1FA	Ford Motor Company, USA	Ford	Passenger Car
1LN	Ford Motor Company, USA	Lincoln	Passenger Car
1ZV	Automotive Alliance International, USA	Ford	Passenger Car
3FA	Ford Motor Company, Mexico	Ford	Passenger Car
3LN	Ford Motor Company, Mexico	Lincoln	Passenger Car
GENERIC TRUCK, BUS, MPV FORMAT			
1FB	Ford Motor Company, USA	Ford	Bus
1FM	Ford Motor Company, USA	Ford	Multipurpose Passenger Vehicle
1FT	Ford Motor Company, USA	Ford	Truck - Completed Vehicle
2FM	Ford Motor Company of Canada, Ltd.	Ford	Multipurpose Passenger Vehicle
2LM	Ford Motor Company of Canada, Ltd.	Lincoln	Multipurpose Passenger Vehicle
5LM	Ford Motor Company, USA	Lincoln	Multipurpose Passenger Vehicle
NM0	Ford Otomotiv Sanayi A.S., Turkey	Ford	Truck - Completed Vehicle
INCOMPLETE VEHICLES			
1FC	Ford Motor Company, USA	Ford	Basic (Stripped) Chassis
1F6	Detroit Chassis LLC, USA	Ford	Basic (Stripped) Chassis
2LJ	Ford Motor Company of Canada, Ltd.	Lincoln	Incomplete Vehicle - Hearse
1FD	Ford Motor Company, USA	Ford	Incomplete Vehicle
3FR	Blue Diamond Truck S. De R.L. De C.V.	Ford	Incomplete Vehicle
5LD	Ford Motor Company, USA	Ford and Lincoln	Incomplete Vehicle - Limousine

VIN POSITION 4 Restraint, Brake System and GVWR Class				Restraint Category									
Vehicle Type	Brake System	GVWR Class*	GVWR Range	1	2	3	4	5	6	7	8	9	10
Passenger Car	-	-	-	K	F	B	H		D	U			
MPV, Truck	Hydraulic	Class A:	Less than 3,000 pounds										
MPV, Truck	Hydraulic	Class B:	3,001-4,000 pounds										
MPV, Truck	Hydraulic	Class C:	4,001-5,000 pounds		Y	K	C					7	
MPV, Truck	Hydraulic	Class D:	5,001-6,000 pounds		Z	L	D	G				U	8
MPV, Truck	Hydraulic	Class E:	6,001-7,000 pounds			M	E	H					
MPV, Truck	Hydraulic	Class F:	7,001-8,000 pounds			N	F	J					
MPV, Truck	Hydraulic	Class G:	8,001-8,500 pounds			P	V						
Truck, Bus	Hydraulic	Class G:	8,501-9,000 pounds	H	C	N							1
Truck, Bus	Hydraulic	Class H:	9,001-10,000 pounds	J	D	S	B	7					2
Truck, Bus	Hydraulic	Class 3:	10,001-14,000 pounds	K	E	W	R	8					3
Truck, Bus	Hydraulic	Class 4:	14,001-16,000 pounds	L	F	X	T	9					4
Truck, Bus	Hydraulic	Class 5:	16,001-19,500 pounds	M	G	A	U	0					5
Truck, Bus	Hydraulic	Class 6:	19,501-26,000 pounds	N									6
Truck, Bus	Hydraulic	Class 7:	26,001-33,000 pounds	P									
Truck, Bus	Air	Class 6:	19,501-26,000 pounds	W									
Truck, Bus	Air	Class 7:	26,001-33,000 pounds	X									
Truck, Bus	Air	Class 8:	33,001-55,000 pounds	Y									

Restraint Category	
Code	Restraint Devices and Location
1	Manual belts WITHOUT air bags
2	Manual belts with driver frontal air bag ONLY
3	Manual belts with driver and passenger frontal air bags
4	Manual belts with driver and passenger frontal air bags and side inflatable restraint (1st row)
5	Manual belts with driver and passenger frontal air bags and side inflatable restraint (1st & 2nd row)
6	Manual belts with driver and passenger frontal air bags and side inflatable restraint (1st, 2nd & 3rd row)
7	Manual belts with driver and passenger frontal air bags and side inflatable restraint (1st & 2nd row) and driver knee air bag
8	Manual belts with driver and passenger frontal air bags and side inflatable restraint (1st, 2nd, & 3rd Row) and driver knee air bag
9	Manual Belts with Driver Only Frontal Air Bags and Side Inflatable Restraint (1st row)
10	No restraints

VIN POSITIONS 5, 6, 7 VIN Code Line, Series, Body Type for Passenger Cars			
VIN Code	Car Line	Series	Body Type
FORD			
POG	Fusion	S	4-Dr. Sedan
POH	Fusion	SE	4-Dr. Sedan
POJ	Fusion	SEL FWD	4-Dr. Sedan

VIN POSITIONS 5, 6, 7 VIN Code Line, Series, Body Type for Passenger Cars CONT'D			
VIN Code	Car Line	Series	Body Type
FORD			
P0C	Fusion	SEL AWD	4-Dr. Sedan
P0K	Fusion	Sport FWD	4-Dr. Sedan
P0D	Fusion	Sport AWD	4-Dr. Sedan
P0L	Fusion	Hybrid	4-Dr. Sedan
P2D	Taurus	SE FWD	4-Dr. Sedan
P2E	Taurus	SEL FWD	4-Dr. Sedan
P2F	Taurus	Limited FWD	4-Dr. Sedan
P2H	Taurus	SEL AWD	4-Dr. Sedan
P2J	Taurus	Limited AWD	4-Dr. Sedan
P2K	Taurus	SHO AWD	4-Dr. Sedan
P4A	Fiesta	S	4-Dr. Sedan
P4B	Fiesta	SE	4-Dr. Sedan
P4E	Fiesta	SE	5-Dr. Hatch
P4C	Fiesta	SEL	4-Dr. Sedan
P4F	Fiesta	SES	5-Dr. Hatch
P3E	Focus	S	4-Dr. Sedan
P3H	Focus	SE	4-Dr. Sedan
P3F	Focus	SEL	4-Dr. Sedan
P3J	Focus	Titanium	4-Dr. Sedan
P3K	Focus	SE	5-Dr. Hatch
P3M	Focus	SEL	5-Dr. Hatch
P3N	Focus	Titanium	5-Dr. Hatch
P3L	Focus	ST	5-Dr. Hatch
P3R	Focus	BEV	5-Dr. Hatch
P8A	Mustang	V6 Coupe	2-Dr. Sedan
P8C	Mustang	GT Coupe	2-Dr. Sedan
P8E	Mustang	V6 Convertible	2-Dr. Sedan
P8F	Mustang	GT Convertible	2-Dr. Sedan
P8J	Mustang	Shelby Coupe	2-Dr. Sedan
P8K	Mustang	Shelby Convertible	2-Dr. Sedan
LINCOLN			
L2G	MKZ	FWD	4-Dr. Sedan
L2J	MKZ	AWD	4-Dr. Sedan
L2L	MKZ	Hybrid	4-Dr. Sedan
L9D	MKS	FWD	4-Dr. Sedan FWD
L9E	MKS	AWD	4-Dr. Sedan AWD
L9F	MKS	EcoBoost™ AWD	4-Dr. Sedan AWD

*"LWB" means Long Wheel Base *"FWD" means Front Wheel Drive *"AWD" means All Wheel Drive *"BEV" means Electric

VIN POSITIONS 5, 6, 7 VIN Code Line, Series, Body Type for Passenger Cars Multipurpose Passenger Vehicles (MPVs), Buses, and Incomplete Vehicles (IV's) with GVW Ratings of 4990 Kilograms (11,000 Pounds) or less:					
VIN CODE	Line	Series	Chassis Type	Cab or Body Type	Vehicle Type
FORD					
K1F	Expedition EL	XL	4X2	4-Door	MPV
K1G	Expedition EL	XL	4X4	4-Door	MPV
K1H	Expedition EL	XLT/King Ranch	4X2	4-Door	MPV/IV
K1J	Expedition EL	XLT/King Ranch	4X4	4-Door	MPV
K1K	Expedition EL	Limited	4X2	4-Door	MPV
K2A	Expedition EL	Limited	4X4	4-Door	MPV
K3A	Edge	Sport	FWD	4-Door	MPV
K3G	Edge	SE	FWD	4-Door	MPV
K3J	Edge	SEL	FWD	4-Door	MPV
K3K	Edge	Limited	FWD	4-Door	MPV
K4A	Edge	Sport	AWD	4-Door	MPV
K4G	Edge	SE	AWD	4-Door	MPV
K4J	Edge	SEL	AWD	4-Door	MPV
K4K	Edge	Limited	AWD	4-Door	MPV
K5B	Flex	SE	FWD	4-Door	MPV
K5C	Flex	SEL	FWD	4-Door	MPV
K5D	Flex	Limited	FWD	4-Door	MPV
K6C	Flex	SEL	AWD	4-Door	MPV
K6D	Flex	Limited	AWD	4-Door	MPV
K7B	Explorer	Base	FWD	4-Door	MPV
K7D	Explorer	XLT	FWD	4-Door	MPV
K7F	Explorer	Limited	FWD	4-Door	MPV
K8B	Explorer	Base	4WD	4-Door	MPV
K8D	Explorer	XLT	4WD	4-Door	MPV
K8F	Explorer	Limited	4WD	4-Door	MPV
U0C	Escape	XLS	4X2	4-Door	MPV
U0D	Escape	XLT	4X2	4-Door	MPV
U0E	Escape	Limited	4X2	4-Door	MPV
U9C	Escape	XLS	4X4	4-Door	MPV
U9D	Escape	XLT	4X4	4-Door	MPV
U9E	Escape	Limited	4X4	4-Door	MPV
U4K	Escape	HEV	4X2	4-Door	MPV
U5K	Escape	HEV	4X4	4-Door	MPV
U1F	Expedition	XL	4X2	4-Door	MPV
U1G	Expedition	XL	4X4	4-Door	MPV
U1H	Expedition	XLT/King Ranch	4X2	4-Door	MPV
U1J	Expedition	XLT/King Ranch	4X4	4-Door	MPV
U1K	Expedition	Limited	4X2	4-Door	MPV
U2A	Expedition	Limited	4X4	4-Door	MPV

VIN POSITIONS 5, 6, 7 VIN Code Line, Series, Body Type for Passenger Cars Multipurpose Passenger Vehicles (MPVs), Buses, and Incomplete Vehicles (IV's) with GVW Ratings of 4990 Kilograms (11,000 Pounds) or less: CONT'D					
VIN CODE	Line	Series	Chassis Type	Cab or Body Type	Vehicle Type
LINCOLN					
J5F	MKT		FWD	4-Door	MPV
J5A	MKT		AWD	4-Door	MPV
J5L	Hearse		AWD	4-Door	IV
J2H	Navigator		4X2	4-Door	MPV
J2J	Navigator		4X4	4-Door	MPV
J3H	Navigator L		4X2	4-Door	MPV / IV
J3J	Navigator L		4X4	4-Door	MPV
J6J	MKX		FWD	4-Door	MPV
J8J	MKX		AWD	4-Door	MPV

*"HEV" means Hybrid Electric Vehicle *"MPV" means Multipurpose Passenger Vehicle *"IV" means Incomplete Vehicle *"SRW" means Single Rear Wheels *"DRW" means Dual Rear Wheels

VIN POSITIONS 5, 6, 7 Line, Series, Chassis, Cab Type or Body Type for Trucks, Multipurpose Passenger Vehicles (MPVs), Buses, Light, Medium & Heavy Trucks and Incomplete Vehicles (IV's):					
VIN CODE	Line	Series	Chassis Type	Cab or Body Type	Vehicle Type
FORD					
F1C	F-Series	F-150	4X2	Regular Cab	Truck
F1E	F-Series	F-150	4X4	Regular Cab	Truck
F2A	F-Series	F-250	4X2	Regular Cab - SRW	Truck / IV
F2B	F-Series	F-250	4X4	Regular Cab - SRW	Truck / IV
F3A	F-Series	F-350	4X2	Regular Cab - SRW	Truck / IV
F3B	F-Series	F-350	4X4	Regular Cab - SRW	Truck / IV
F3C	F-Series	F-350	4X2	Regular Cab - DRW	Truck / IV
F3D	F-Series	F-350	4X4	Regular Cab - DRW	Truck / IV
F3E	F-Series	F-350	4X2	Regular Cab - SRW	IV
F3F	F-Series	F-350	4X4	Regular Cab - SRW	IV
F3G	F-Series	F-350	4X2	Regular Cab - DRW	IV
F3H	F-Series	F-350	4X4	Regular Cab - DRW	IV
F4G	F-Series	F-450	4X2	Regular Cab - DRW	IV
F4H	F-Series	F-450	4X4	Regular Cab - DRW	IV
F5G	F-Series	F-550	4X2	Regular Cab - DRW	IV
F5H	F-Series	F-550	4X4	Regular Cab - DRW	IV
F6F	F-Super Duty Diesel	F-650	DRW 4X2	Reg Cab Straight Frame	IV
F6G	F-Super Duty Diesel	F-650	DRW 4X2	Reg Cab Kick-Up Frame	IV
F6H	F-Super Duty Gas	F-650	DRW 4X2	Reg Cab Straight Frame	IV
F6J	F-Super Duty Gas	F-650	DRW 4X2	Reg Cab Kick-Up Frame	IV
F6U	F-Super Duty Gas-Uhaul	F-650	DRW 4X2	Reg Cab Straight Frame	IV
F7F	F-Super Duty Diesel	F-750	DRW 4X2	Reg Cab Straight Frame	IV
W1C	F-Series	F-150	4X2	SuperCrew	Truck
W1E	F-Series	F-150	4X4	SuperCrew	Truck
W1R	F-Series	F-150	4X4	SuperCrew - Raptor SVT	Truck
W2A	F-Series	F-250	4X2	Crew Cab - SRW	Truck / IV
W2B	F-Series	F-250	4X4	Crew Cab - SRW	Truck / IV
W3A	F-Series	F-350	4X2	Crew Cab - SRW	Truck / IV
W3B	F-Series	F-350	4X4	Crew Cab - SRW	Truck / IV
W3C	F-Series	F-350	4X2	Crew Cab - DRW	Truck / IV
W3D	F-Series	F-350	4X4	Crew Cab - DRW	Truck / IV
W3E	F-Series	F-350	4X2	Crew Cab - SRW	IV
W3F	F-Series	F-350	4X4	Crew Cab - SRW	IV
W3G	F-Series	F-350	4X2	Crew Cab - DRW	IV
W3H	F-Series	F-350	4X4	Crew Cab - DRW	IV
W4D	F-Series	F-450	4X4	Crew Cab - DRW	Truck / IV
W4G	F-Series	F-450	4X2	Crew Cab - DRW	IV
W4H	F-Series	F-450	4X4	Crew Cab - DRW	IV
W5G	F-Series	F-550	4X2	Crew Cab - DRW	IV
W5H	F-Series	F-550	4X4	Crew Cab - DRW	IV
W6F	F-Super Duty Diesel	F-650	DRW 4X2	Crew Cab Straight Frame	IV
W6G	F-Super Duty Diesel	F-650	DRW 4X2	Crew Cab Kick-Up Frame	IV
W6H	F-Super Duty Gas	F-650	DRW 4X2	Crew Cab Straight Frame	IV
W6J	F-Super Duty Gas	F-650	DRW 4X2	Crew Cab Kick-Up Frame	IV
W7F	F-Super Duty Diesel	F-750	DRW 4X2	Crew Cab Straight Frame	IV
X1C	F-Series	F-150	4X2	SuperCab	Truck
X1E	F-Series	F-150	4X4	SuperCab	Truck
X1R	F-Series	F-150	4X4	SuperCab - Raptor SVT	Truck
X2A	F-Series	F-250	4X2	SuperCab - SRW	Truck / IV
X2B	F-Series	F-250	4X4	SuperCab - SRW	Truck / IV
X3A	F-Series	F-350	4X2	SuperCab - SRW	Truck / IV
X3B	F-Series	F-350	4X4	SuperCab - SRW	Truck / IV
X3C	F-Series	F-350	4X2	SuperCab - DRW	Truck / IV
X3D	F-Series	F-350	4X4	SuperCab - DRW	Truck / IV
X3E	F-Series	F-350	4X2	SuperCab - SRW	IV
X3F</					